



Original

Operating Instructions with EU Declaration of Conformity

According to the EC Machinery Directive 2006/42/II B

CE for the incomplete machine, incomplete alone is not functional.

January 2022

Kaitstud / Secured by <https://mereneid.eu/>



TABLE OF CONTENTS

A Operating instructions

A 1 Pictorial documentation of the system

A 2 Safety instructions

2.1 Intended use

2.2 Organisational measures

2.3 Selection and qualification of personnel

2.4 Safety instructions for normal operation

2.5 Safe removal of possible blockages

2.6 Information on particular hazards

2.6.1 Electrical energy

2.6.2 Block diagram / schematic diagram of the system

2.6.3 Noise

2.7 Accident prevention rules

2.8 Information on transporting the system

2.9 Information on storing the system

2.10 Information regarding decommissioning, dismantling and disposal

B Installation specifications and instructions for use

C Information on system / technical data

D EU Declaration of Conformity and standards applied

A OPERATING INSTRUCTIONS

A 1 Pictorial documentation of the system



Figure no. 1

Ready-to-install suction filter apparatus with main filter element



Figure no. 2

Blower motor and air intake ring, along with information sign on use and commissioning in installed condition only

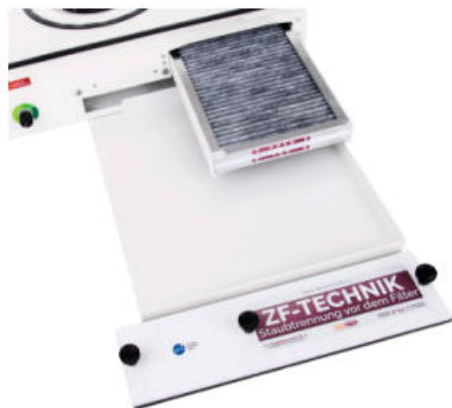


Figure no. 3

Device with extended main filter element and opening for filter change

NOVA FLAIR GmbH & Co. KG
An der Ronceva 10-12
32312 Lübbecke / Germany



Taifun I GreenTech
230V 50-60Hz 83W
Made in Germany

2019



Figure no. 4

Illustration of Taifun I professional nail dust collector type plate (exemplary image)

A 2 Safety instructions

A 2.1 Intended use

The nail dust collector is designed to be installed under a worktable or a table top, and is designed exclusively to collect dust as it accumulates during work in a nail studio.



Any other use beyond this that does not comply with accident prevention rules of the employers' liability insurance association is considered improper use. The manufacturer is not liable for any damages resulting from this. In such a case, the user must bear the risk alone.

Intended use also includes observance of the respective manufacturer's operating instructions for the system components of the collection system along with the inspection and maintenance instructions.

The system components are built and linked according to the latest state of the art and the recognised safety rules. Nevertheless, their use may endanger the user or third parties, or cause damage to the system or other material assets.

Regardless of the laws and regulations mentioned in these instructions, the applicable laws and regulations must be observed and the generally recognised rules of technology must be applied.

A 2.2 Organisational measures

The operating instructions for the Taifun I nail dust collector must always be available to the operating and maintenance personnel.

In addition to the operating instructions, generally applicable statutory regulations and other binding in-house rules on accident prevention and environmental protection must be observed and instructed. It must be ensured that the filters are cleaned regularly and cleaned dry in accordance with the instructions for use. If cleaning is no longer possible, the filters must be replaced by the exchange filters specified by the manufacturer. The replaced or clogged filters must be disposed of in accordance with the Closed Substance Cycle and Waste Management Act. Prior to



starting work, the personnel responsible for collection activities must have read and understood the operating instructions and in particular the section on safety instructions.

We recommend that management to take signatures to confirm that the briefings have been carried out.

All safety and hazard instructions on the system must be observed.

All safety and hazard instructions on the machine must be kept completely legible.

If safety-related changes are made to the machine or its operating behaviour, the machine must be shut down immediately, the fault must be eliminated and the responsible body or person must be notified immediately. No modifications, attachments or conversions that impair safety may be made to the machine without the approval of the collection system manufacturer. Intervals for recurring checks / inspections prescribed or specified in the operating instructions must be observed. This also applies to maintenance instructions in the documentation of the component manufacturers.

A 2.3 Selection and qualification of personnel

Only mentally and physically suitable persons who are at least 16 years old and have received instruction may work on the machine.

Work on the electrical equipment of the collection system may only be carried out by a qualified electrician or by a „specially instructed person“ under the instruction and supervision of a qualified electrician in accordance with electrical engineering regulations. Specialists and instructed persons in this case refer to service technicians / customer support staff of the manufacturer or trained electricians.

A 2.4 Safety instructions for normal operation

If used commercially, the collection system must be inspected at least once per year by a qualified person in accordance with the following guidelines of the employers liability insurance association.



BGV A3 „Electrical systems and operating equipment“

In addition, the system must be checked to ensure safe operating condition in accordance with the requirements of the Regulation on Industrial Safety and Health on a regular basis, at least once per year. The checks must be documented in accordance with the specifications.

A Safe removal of possible blockages

In the event that a foreign object gets inside the housing or in the blower motors, proceed as follows:

- Disconnect the device from the mains voltage
- Try to remove the foreign object from the outside
- If the foreign object cannot be removed from the outside, the device must be dismantled and (if necessary) opened by an instructed specialist.

» Safety instructions



- intended purpose must be avoided.
- The collection system may only be operated by persons who are mentally and physically suitable.
- Make sure that the mains voltage corresponds to the required voltage of 230 V.
- The collection system & filters must be cleaned or replaced regularly according to the manufacturer's instructions.
- Only the filters listed in the operating instructions and provided by the manufacturer may be used.
- Suitable measures must be taken to ensure that the collection system is only used in a safe and functional condition.
- Prior to any use of the collection system, it must be checked for externally visible damages and defects.
- To avoid electric shock or other hazards, never open an electrical housing or insert objects into the housing.
- The collection system is protected by a built-in fuse. A defective fuse may not be bypassed or replaced by a stronger fuse.
- Safety-related damages (e.g. loosened screw connections, defective protective devices, electrical faults, defective operating devices) must be reported to the responsible supervisor or manufacturer. The manufacturer must then check whether safe operation is still possible.
- Repairs may only be carried out by authorised and competent persons.
- Prior to starting work, every employee must ensure that nobody is endangered by the use of the collection system.
- A damaged collection system must be shut down immediately and secured to prevent it from starting up again.

A 2.6 Information on particular hazards

electrical engineering.

A 2.6.1 Electrical energy

Only use original fuses with specified current! Make sure that the mains voltage corresponds to the required voltage of 230 V.



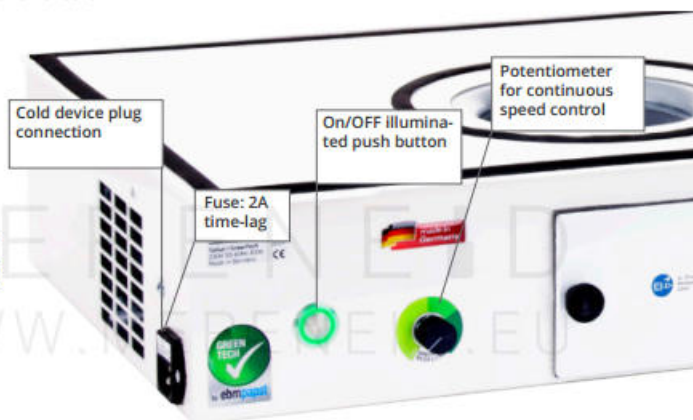
In the event of disruptions in the electrical power supply, switch off the machine immediately.

Work on electrical systems or operating equipment may only be carried out by a qualified electrician or by instructed persons under the direction and supervision of a qualified electrician in accordance with the rules of

If inspection, maintenance, cleaning and repair work is to be carried out on machine parts, the collection system must be disconnected from the power circuit or disconnected from the power supply by removing the power plug from the socket.

The electrical equipment of the machine must be inspected / checked on a regular basis. Defects, such as loose connections or burned cables, must be rectified immediately.

Figure no. 5
Front/side view of the extraction unit with operating devices and mains connection



A 2.6.2 Block diagram / schematic diagram of the system



A 2.6.3 Noise

The machine generates only minor barely perceptible vibrations and noise with a rating level of LAR > 58 dB(a). According to the Noise and Vibration Occupational Safety Regulation, these do not constitute health hazards.

A 2.7 Accident prevention rules

The individual employers' liability insurance associations issue accident prevention rules (German: UVV) relevant only to their area.



The collection of individual accident prevention rules published by Hauptverband der gewerblichen Berufsgenossenschaften comprises all the currently valid accident prevention rules (UVV) issued by commercial employers' liability insurance associations.

The most important accident prevention rules:

BGV A3

Electrical systems and operating equipment

BGV A8

Safety and health protection signage at the workplace

GS-BIA-M02

Basic principles for the testing and certification of dust-removing machines and devices (German: SBM)

GS-BIA-M06

Basic principles for the testing of filters for use in dust-removing machines

VDI 3801

Operation of air-conditioning and ventilation systems

VDI 3803

Air-conditioning and ventilation systems; structural and technical requirements

VDI 6022

Hygienic requirements for air-conditioning and ventilation systems

LärmVibrationsArbSchV

Noise and Vibration Occupational Safety Regulation

A 2.8 Information on transporting the system

To prevent foreign bodies from entering the device, the filters are to be inserted and the filter openings are to be closed. A suitable cardboard box should also be used to transport the system, in order to prevent foreign bodies from entering the collection system, filters or motors from above.

Before setting the system back up again, it must be ensured that no foreign bodies are present in the system itself, in the filters or in

the motors.

For reinstallation, the installation instructions prescribed on the following page 8 apply.

A 2.9 Information on storing the system

The system must always be stored in a dry and dust-free environment. A suitable cardboard box must also be used for this purpose.

If the system becomes dirty during storage nevertheless, it must be thoroughly cleaned prior to installation and start-up. This is to be carried out after briefing by a specialist or an instructed person.

A 2.10 Information on decommissioning, dismantling and disposal

If individual system components are to be decommissioned, the respective manufacturer's operating instructions for the components must be consulted. If individual system components are removed from the network and the system as a whole continues to be operated, care must be taken to secure possible danger points. If this impairs the safety level of the system in individual areas or as a whole, the manufacturer's CE Declaration of Conformity will lose its validity. Responsibility for this lies with the operator.

When dismantling larger system components and assemblies, a hazard analysis must be carried out, in which it is determined whether risks will thereby arise for the employees. A work plan must define the work to be carried out in terms of sequence and safe working.



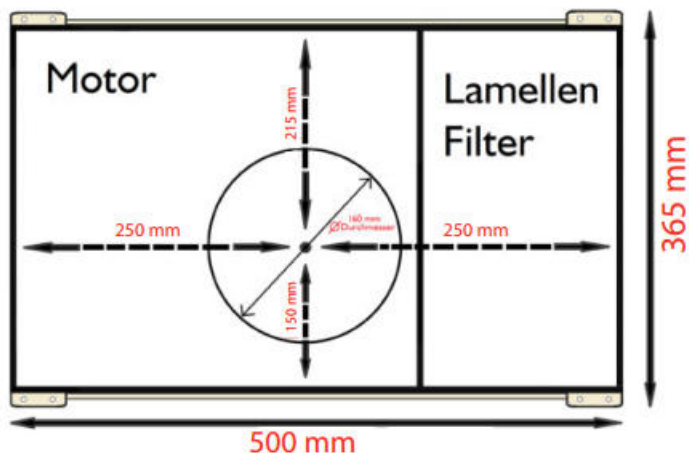
Register for Waste Electric Equipment (ear).



Our reg. no. at the Waste Electric Equipment Foundation Register:

WEEE-Reg.-Nr. DE 22364359

B INSTALLATION SPECIFICATIONS AND INSTRUCTIONS FOR USE



1. Carefully unpack the dust collector and first check that the black rubber seals on the edges stick properly.
2. Make markings on the underside of the tabletop for fastening the unit. If there is no cut-out yet, make a cut-out in the table top with a router/jigsaw or similar with a diameter of \varnothing 160 mm.
3. Place the dust collector unit on the lower side of the table top and adjust it so that the cut-out for the ventilation grille is centred inside the circular seal.
4. Now you can attach the dust extraction with suitable screws. (not included in the scope of delivery).

Please pay attention to the length of the screws!

If anything is unclear, please contact us via the communication channels known to you. It will then be explained to you again in detail.

Operating Manual Taifun I GreenTech

Function

The nail dust collector is switched on and off via the green push button. The speed control serves to continuously adjust the power.

Cleaning

Use the hand screws (knurled screws) to loosen the removable front panel and carefully pull out the activated carbon plate-type filter slowly at a loop.

Ideally, use our dust collection shell (available separately) for this purpose.

The activated carbon plate-type filter should be taken out and cleaned approximately 3-5 times per month. The remaining coarse dust is simply removed by pulling out the large dust collection shell (optionally

available) and disposed of. If no dust collection shell is available, the dust must be collected from the inside through the large filter openings with a vacuum cleaner and a narrow joint nozzle attachment or the like.

Moreover, clean or vacuum the plate-type filter very carefully on the lower side only (not the clean air side above). Do not treat with a liquid, and replace after approx. one year. Filter changing and cleaning frequency may vary according to amount of work, upkeep and customer volume.

C INFORMATION ON SYSTEM / TECHNICAL DATA

Professional nail dust collector for under-table installation

Nail dust collector	Model Year manufacturer	Taifun I GreenTech See type plate of the respective system	Nova Flair GmbH & Co. KG
The above-mentioned nail dust collector was combined with individual machine parts from various manufacturers to form one collection system.			

System part	Model and designation	Manufacturer
Electrical connected load	230 V	
	50 - 60 Hz	
	83 W	
Aluminium housing	Housing made of anodised aluminium sheet, powder-coated, dimensions W/H/D approx. 50 x 36 x 11.5 [cm].	
Net weight	5 kg	
Switch Button	Illuminated double-pole ON-OFF push button	
Fuse	2A time-lag	Weltron-Elektronik GmbH
Fans	Model R3G146-AH23-01 radial blowers	ebm-papst Mulfingen GmbH & Co KG
Filters	Fine dust plate-type filters with an activated carbon coating and a filter area of approx. 3,350 [cm ²].	
Flow rate quantity, maximum	320 [m ³ /h]	
Final pressure difference	400 [Pa]	

D EU DECLARATION OF CONFORMITY

For the product described below:

Subject matter of the declaration: Professional Nail Dust Collector

Model: Taifun I GreenTech

it is hereby declared that it complies with the essential requirements laid down in the harmonisation legislation referred to below:

Document-no.	Title
2006/42/EG	Directive 2006/42/EC of the European Parliament and of the Council of 17 May 2006 on machinery, and amending Directive 95/16/EC (recast).
2014/30/EU	Directive 2014/30/EU of the European Parliament and of the Council of 26 February 2014 on the harmonisation of the laws of the Member States relating to electromagnetic compatibility (recast).
2011/65/EU	Directive 2011/65/EU of the European Parliament and of the Council of 8 June 2011 on the restriction of the use of certain hazardous substances in electrical and electronic equipment (recast).

The aforementioned product conforms to the requirements of the following documents:

Reference	Title	Date of issue
Harmonised standards for the Machinery Directives:		
EN ISO 12100 : 2013	Safety of machinery - General principles for design - Risk assessment and risk reduction	2013-08
EN ISO 13857	Safety of machinery - Safety distances to prevent hazard zones being reached by upper and lower limbs	2008-03
EN 60335-1	Household and similar electrical appliances - Safety - Part 1: General requirements	2012-10
EN 61310-1	Safety of machinery - Display, Marking and operating. Part 1: Requirements for visible, audible and tactile signals	2008-02
EN 61310-2	Safety of machinery - Indication, marking and Identification and operation - Part 2: Requirements for the marking	2008-01
EN 61310-3	Safety of machinery - Display, Identification and operation Part 3: Requirements for the Arrangement and operation of control elements (actuators)	2008-02

Harmonised standards for the EMC Directive:

EN 55014-1 EN 55014-1/A1 EN 55014-1/A2	Electromagnetic compatibility - Requirements for household appliances, electric tools and similar electrical appliances Part 1: Interference emission	2006-12 2009-05 2011-09
EN 55014-2 EN 55014-2/AC EN 55014-2/A1 EN 55014-2/A2	Electromagnetic compatibility - Requirements for household appliances, electric tools and similar electrical appliances Part 2: Immunity - Product family standard	1997-02 1997-12 2001-12 2008-10
EN 61000-3-2	Electromagnetic compatibility (EMC) Part 3-2: Limits - Limits for harmonic currents (equipment input current ≤ 16 A per conductor)	2014-08
EN 61000-3-3	Electromagnetic compatibility (EMC) Part 3-3: Limits - Limitation of voltage changes & variations and flicker in public low-voltage supply systems for equipment with a rated current ≤ 16 A per conductor not subject to a special condition subject to a special connection condition	2013-08

The declaration is made by:

Name, first name: Herb, Albert
 Function: Managing Director/Document Authorised Representative


The sole responsibility for drawing up this EU declaration of conformity in relation to the fulfilment of the essential requirements and the preparation of the technical documentation shall lie with the manufacturer:

Name: Nova Flair GmbH & Co. KG | Albert & Anton Herb
 Address: An der Ronceva 10-12 | 32312 Lübbecke | Germany

Date **City** **Company stamp and signature Managing Partner**

01/01/2022 Lübbecke

NOVA FLAIR
 Nova Flair GmbH & Co. KG
 An der Ronceva 10-12
 32312 Lübbecke · Germany
 Tel.: 057 41 / 23 55 - 92 Fax: -94
 E-Mail: info@novaflair.de
 www.novaflair.de



Additional information:

- 1 This declaration applies to all specimens manufactured according to the corresponding production drawings - which are part of the technical documentation. Further information on compliance with the above references is given in the supporting documentation attached to the declaration of conformity.



NAIL AND COSMETICS STUDIO FURNITURE AND EQUIPMENT

M E R E N E I D 
WWW.MERENEID.EU

Nova Flair GmbH & Co. KG
An der Ronceva 10-12 | 32312 Lübbecke | Germany

January 2022

Kaitstud / Secured by <https://mereneid.eu/>